



# **win|RTA Studio QuickStart Guide**

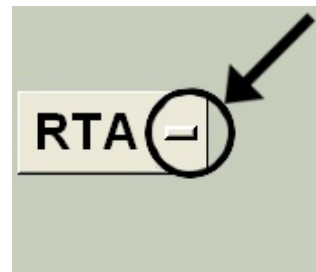
Version 2.6

**AcoustX**  
**Middletown, CA**  
**Tel: 707-537-1310**  
**[www.acoustx.us](http://www.acoustx.us)**

---

Welcome to AcoustX win|RTA Studio software. This guide will provide you with an overview of setting up and running the software and connecting it to your hardware. The QuickStart Guide serves as a basic reference.

When you see a button with a bar on the right side, this indicates that when you click on it, a drop-down menu will appear.



#### NOTICE

© Copyright 2020 AcoustX. All rights reserved.

This manual contains confidential and proprietary information protected by copyright laws. No part of this publication may be reproduced, transmitted, transcribed, stored in a retrieval system, or translated into any language, in any form or by any means, electronic, mechanical, photocopying, recording, or otherwise, without the prior written permission of AcoustX. The information furnished herein is believed to be accurate and reliable. However, AcoustX assumes no responsibility for its use, or for any infringements of patents or other rights of third parties resulting from its use. AcoustX reserves the right to modify at any time the product functionality and features where appropriate, without notice.

Version 2.6

#### Limited Warranty

The win|RTA software is distributed on an “as is” basis, without warranty. AcoustX makes no representation or warranty, either expressed or implied, with respect to the software programs, their accuracy, quality, or fitness for a specific purpose. AcoustX shall have no liability to the purchaser, or to any other person or entity with respect to any liability, loss, or damage caused, or alleged to have been caused either directly or indirectly by the software contained on the distribution disk. This includes, but is not limited to, interruption of service, loss of data, time, or profits, or consequential damages resulting from the use of the software. If the distribution medium is defective, you may return it for a replacement within the warranty period.

# Installation Procedure

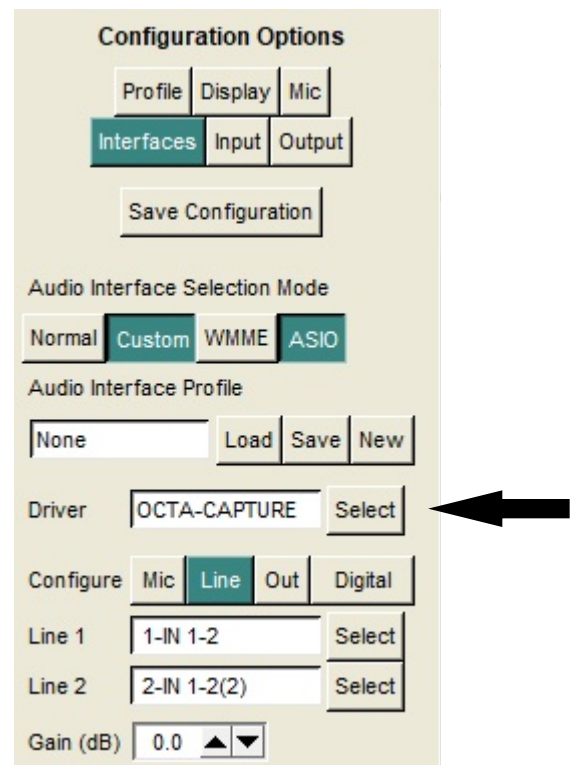
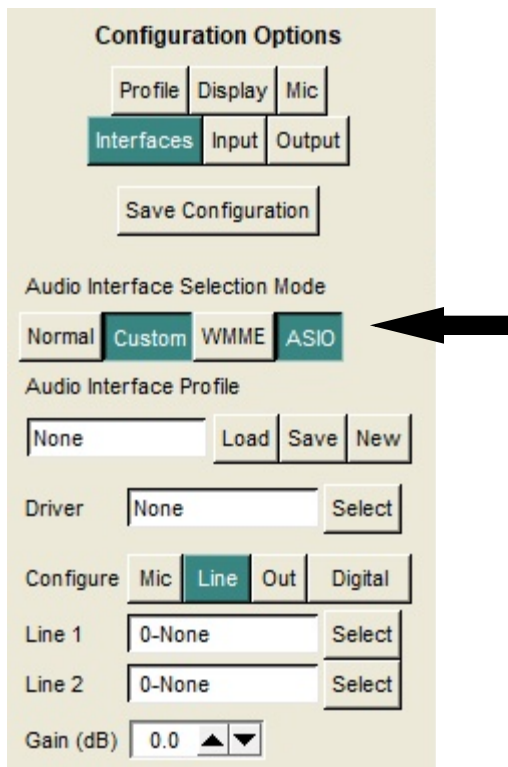
The software can be configured to accommodate many multichannel interfaces. For setting up a system using the MOTU 4Pre, please refer to Studio QuickStart Guide V2.2. For setting up a system using the MOTU Traveler, please refer to Studio QuickStart Guide V1.8.

This document will show the basic procedure for configuring a multichannel interface that utilizes an ASIO driver.

This example will use the Roland Octa-Capture.

First, select Config->Interfaces->ASIO

Next, select the driver.



Click on the Mic button to configure the microphone inputs.

Set the microphone gain using the Gain spinbox. In this case, the device was set for 28 dB gain. For best results, use a microphone calibrator to set the gain.

Click Save to save and load the ASIO configuration (AIX file in program directory)

**Configuration Options**

Profile Display Mic  
Interfaces Input Output  
Save Configuration

Audio Interface Selection Mode  
Normal Custom WMME ASIO

Audio Interface Profile  
None Load Save New

Driver OCTA-CAPTURE Select

Channels 2 4 8

Configure Mic Line Out Digital

Mic 1	1-IN 1-2	Select
Mic 2	2-IN 1-2(2)	Select
Mic 3	3-IN 3-4	Select
Mic 4	4-IN 3-4(4)	Select
Mic 5	5-IN 5-6	Select
Mic 6	6-IN 5-6(6)	Select
Mic 7	7-IN 7-8	Select
Mic 8	8-IN 7-8(8)	Select

Gain (dB) 0.0 ▲▼

**Configuration Options**

Profile Display Mic  
Interfaces Input Output  
Save Configuration

Audio Interface Selection Mode  
Normal Custom WMME ASIO

Audio Interface Profile  
None Load Save New

Driver OCTA-CAPTURE Select

Channels 2 4 8

Configure Mic Line Out Digital

Mic 1	1-IN 1-2	Select
Mic 2	2-IN 1-2(2)	Select
Mic 3	3-IN 3-4	Select
Mic 4	4-IN 3-4(4)	Select
Mic 5	5-IN 5-6	Select
Mic 6	6-IN 5-6(6)	Select
Mic 7	7-IN 7-8	Select
Mic 8	8-IN 7-8(8)	Select

Gain (dB) 0.0 ▲▼

# Configuration: Microphones and Interfaces

**Configuration Options**

Profile | Display | **Mic**

Interfaces | Input | Output

Save Configuration

Apply Mic Calibration

Cal Files | Mic Params

Mic 1 S/N	3001	Clear
Mic 2 S/N	3002	Clear
Mic 3 S/N	3003	Clear
Mic 4 S/N	3004	Clear
Mic 5 S/N	3005	Clear
Mic 6 S/N	3006	Clear
Mic 7 S/N	3007	Clear
Mic 8 S/N	3008	Clear

Export comma delimiter

Import / Export frequency data

As measured

As compensation offset

Enable and load microphone calibration files.

Disable one or more microphones

Adjust the gain of individual microphones.

When exporting a mic cal file using Shift-click Clear (Export), insert a comma after the frequency.

Most microphone calibration files are "As measured".

**Configuration Options**

Profile | Display | **Mic**

Interfaces | Input | Output

Save Configuration

Apply Mic Calibration

Cal Files | **Mic Params**

	Bump	Disable	EAI
Mic 1	0.0 ▲▼	<input type="checkbox"/>	<input checked="" type="checkbox"/>
Mic 2	0.0 ▲▼	<input type="checkbox"/>	<input checked="" type="checkbox"/>
Mic 3	0.0 ▲▼	<input type="checkbox"/>	<input checked="" type="checkbox"/>
Mic 4	0.0 ▲▼	<input type="checkbox"/>	<input checked="" type="checkbox"/>
Mic 5	0.0 ▲▼	<input type="checkbox"/>	<input checked="" type="checkbox"/>
Mic 6	0.0 ▲▼	<input type="checkbox"/>	<input checked="" type="checkbox"/>
Mic 7	0.0 ▲▼	<input type="checkbox"/>	<input checked="" type="checkbox"/>
Mic 8	0.0 ▲▼	<input type="checkbox"/>	<input checked="" type="checkbox"/>

Microphone response conversion

None

Pressure to free field

Free field to pressure

If the loaded mic cal files are configured for EAI, a check will appear in the EAI checkboxes. To use EAI, either these boxes must be checked, or one of the mic cal files must be exported (SHIFT-click Clear) and loaded into the external software. For more information on EAI, see <http://acoustx.us/eai.html>.

Change the response type of the microphone. For a discussion of this topic, see the AcoustX website.

# Configuration: I/O

The screenshot shows the 'Configuration Options' window with the 'Input' tab selected. The 'Input' section has 'Mic' selected. The 'Channel' section has '1' selected. The 'Plex Rate (per second)' section has '1' selected. The 'High Pass Filter' checkbox is unchecked. The '0 dBFS Reference' section has 'Full scale square wave' selected.

Select Input

Select input channel  
(Mic selection is on main screen)

Set Plex rate

Enable 22 Hz high pass filter for  
FLAT, Line In, S/PDIF

Set dBFS reference. There is a 3  
dB difference between settings.

The screenshot shows the 'Configuration Options' window with the 'Output' tab selected. The 'Test Signal Type' section has 'Pink' selected. The 'Test Signal Output' section has 'Analog' selected. The 'Output Levels' section has '300' and 'mV' selected. The 'Output Channels' section has 'Ch 1' and 'Ch 2' checked.

Configure pink noise button behavior

Select test signal output port (optional AC3 encoder is  
shown)

Set units of measure and level for outputs

Enable outputs. In Analog mode, the  
channels can be named.

# Configuration: Profile

**Configuration Options**

Operator

Company

Room ID

Data Dir

CTT Profile

Cinema  Mix  Home

Length Units

Feet  Meters

Window Size

Normal  Compact

Write configuration data to disk

Technician name

Organization

Name of theatre

Selected data directory  
Defaults to "My Documents"

Set which modes are available in Mode menu

Set software options for type of room under test

Set default units for measurements

Set size of win|RTA main window

# Configuration: Display

**Configuration Options**

Profile **Display** Mic

Interfaces Input Output

Save Configuration

Octave Grid

Show Values

Show EAI msg

Reverse Slider

Balloon Help

Show Pass/Fail

Cell Uniformity

User Avg Time

Variable X-Curve

ST202  # Seats

Sliding Knee  Room Length

X-Curve Position  ▲ ▼

Data Averaging

File #1	<input type="text"/>	Clear
File #2	<input type="text"/>	Clear
File #3	<input type="text"/>	Clear
File #4	<input type="text"/>	Clear

Gain Leveling

Calculate

Display octave markers

Show bar values when cursor is moved over a bar

Show EAI mic config warning message

Reverse the action of the Reference slider

Enable balloon help

Show PASS/FAIL limits in CTT

Set display for Cat. No. 566 test film

Set length of User Average

Enable Variable X-curve

Lower X-Curve position

Select files for to calculate a multiplexed response from individual microphone data.



# Main Software Screen

Labels and descriptions for the WINRTA software screen:

- Select file to display as File A (left bar when A and B selected)
- Input channel
- Exit win|RTA
- Pink noise ON/OFF
- Save the current measurement (Shift-Click to export as text)
- Clear screen and reset to default settings
- SPL/ Main reading window
- Turn on analyzer
- Stop all processes
- Print screen
- Select file to display as File B (right bar when A and B selected)
- Set analyzer mode
- Filename for File B
- Measurement units
- Start selected test
- Vertical scale
- Open Config window
- Set length of timed average
- Timed average countdown
- Reference line
- Change Reference line
- Screen response
- Vertical resolution
- Frequency resolution
- Filter band center frequencies
- User definable function keys. Shift key enables new row of keys. Click on F-key number to display and set function choices.
- File view mode
- Display offset

## SPECIAL KEYS AND FUNCTIONS

- ESC key kills all processes
- PgUp/PgDn or mouse wheel moves reference line
- Shift shows new row of function keys
- Shift-click on Save button to export as text (.TXT)
- Click and drag mouse on display to zoom view in RTA mode
- Right-click displays edit menu when in comment
- Hold cursor over filename field to see full pathname

## CTT MODE KEYS

- Up/Down arrow moves among menu selections
- Left/Right arrow moves in or out of current menu
- Alt-Left Arrow moves up one level when in a data entry field
- Shift-click on Home CTT Coverage test button to rename